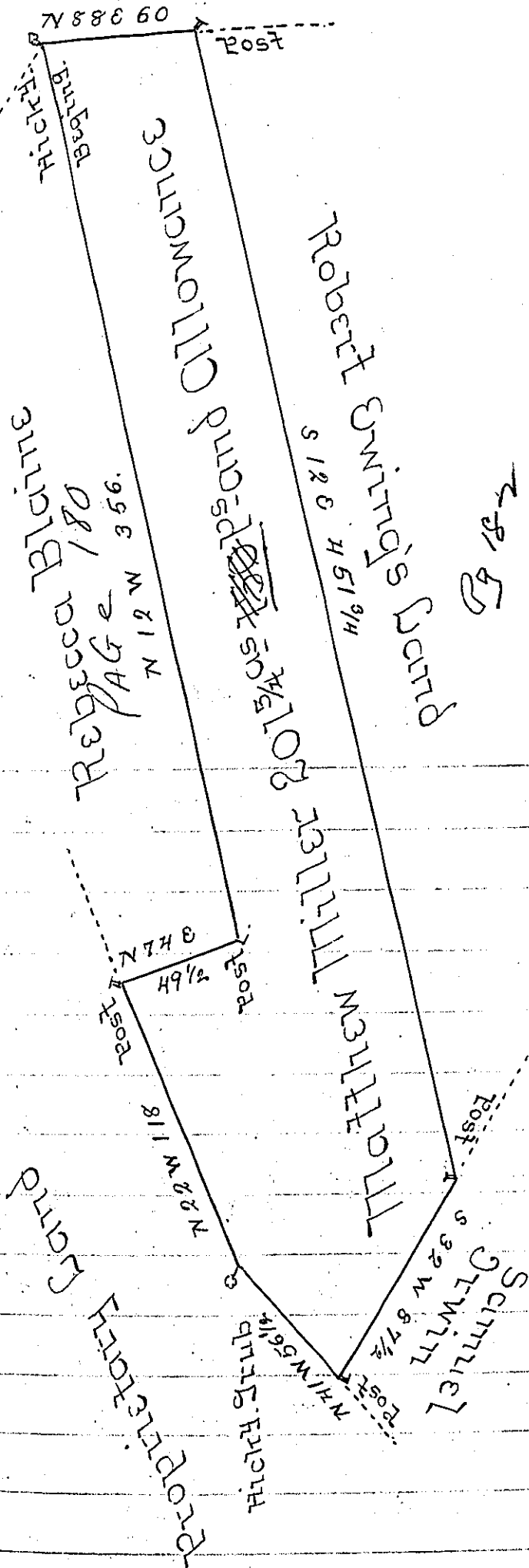


Eph<sup>m</sup> Blaine



The Draught of a Tract of Land Situate in Middleton Township Cumberland County Containing Two Hundred and One Acres and 150 Perches and Allowance of Six p Cent for Roads &c surveyed May 30<sup>th</sup> 1785 in Pursuance of the Honorable the Proprietaries Warrant to Matthew Miller Dated December 2<sup>nd</sup> 1766

P-Sam'l Lyon D.S.

John Lukens Esq<sup>r</sup>  
 Surveyor General

IN TESTIMONY that the above is a copy of the original remaining on file in the Department of Internal Affairs of Pennsylvania, made conformably to an Act of Assembly approved the 16th day of February, 1833, I have hereunto set my Hand and caused the Seal of said Department to be affixed at Harrisburg, this 27<sup>th</sup> day of December 1905

*Geo. P. Brown*  
 Secretary of Internal Affairs.